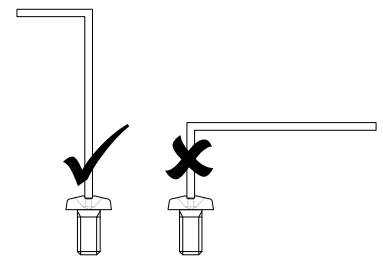
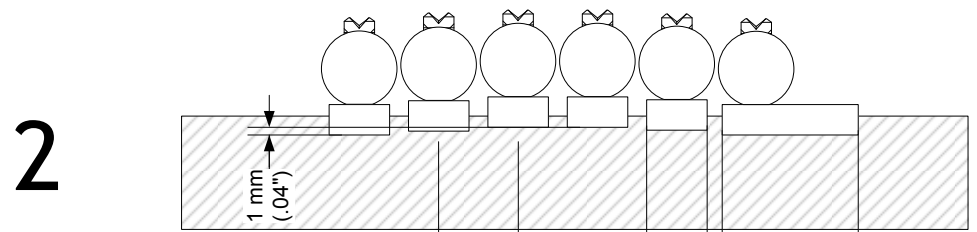
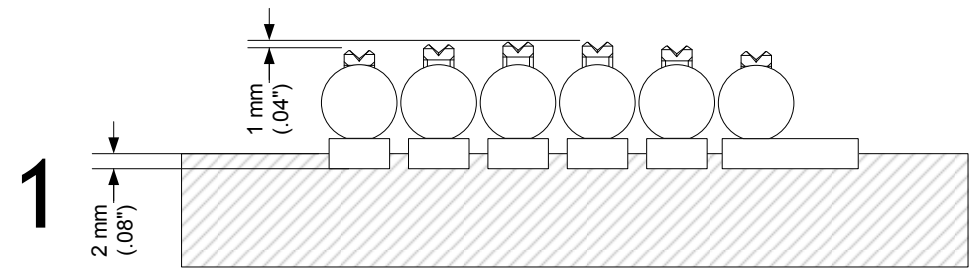
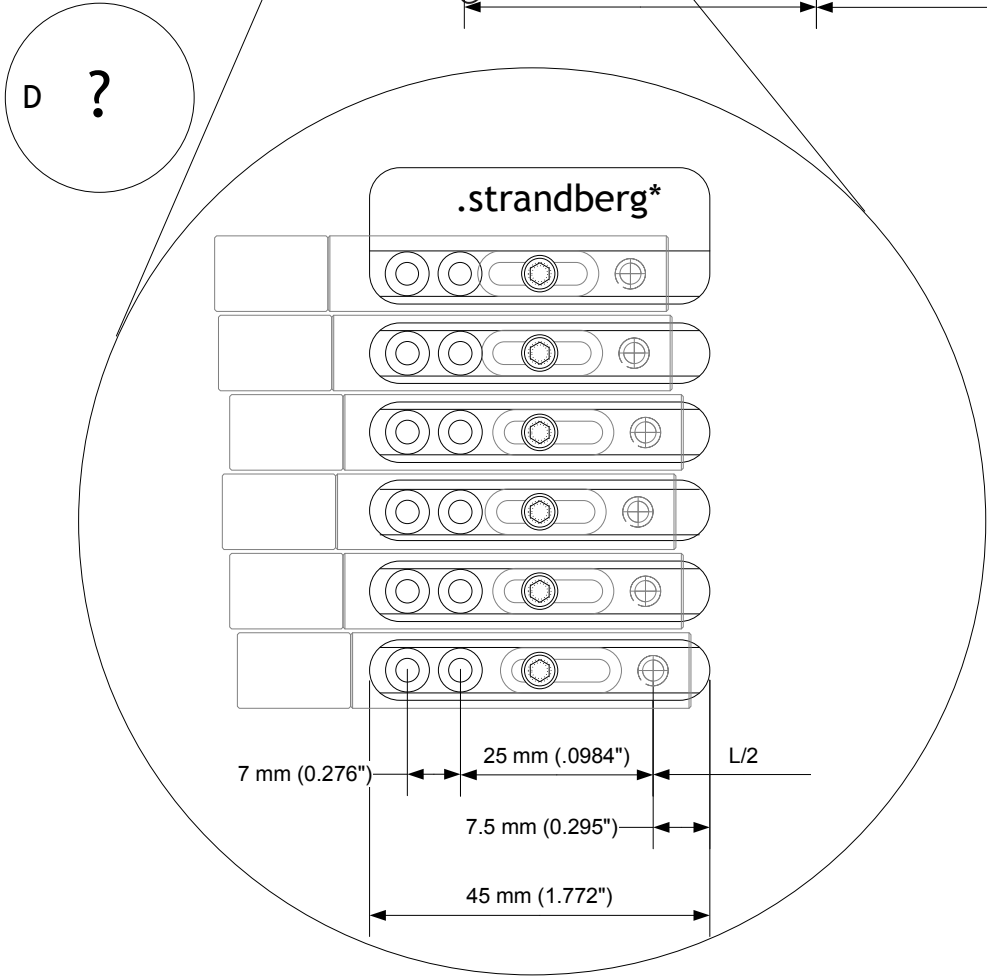
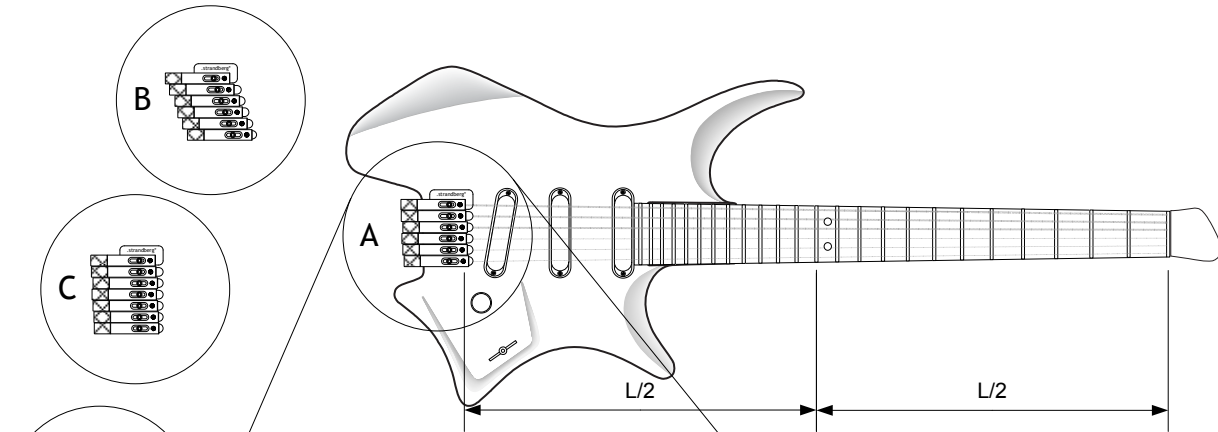


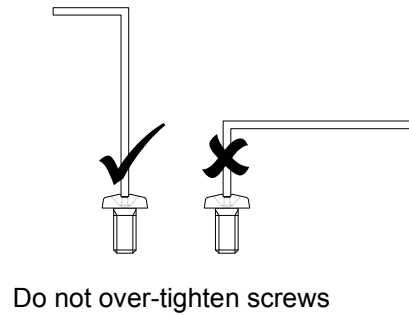
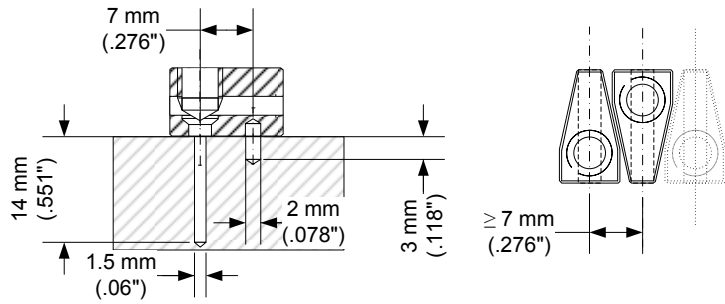
.installationGuide* bridge



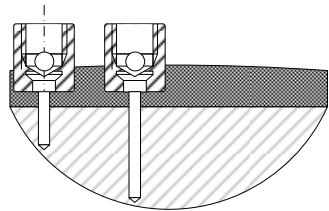
10.1 mm (.398") min
10.5 mm (.413")
recommended

8 mm (.315")
18 mm (.708")

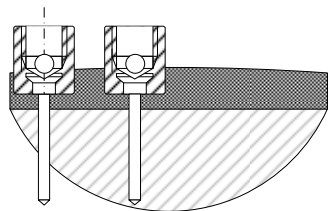
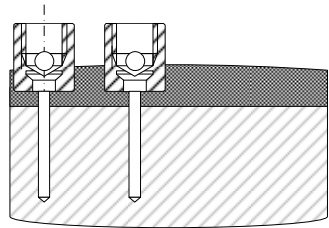
Do not over-tighten screws



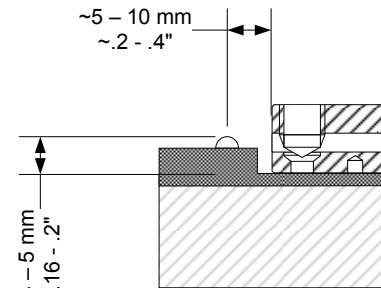
.installationGuide* string lock



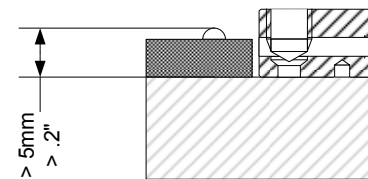
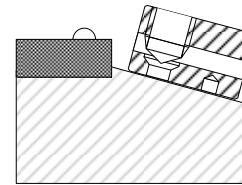
Ensure proper depth of holes and adjust length of mounting screws if required



If mounted close to the edge, or if screws are kept at full length, the neck may be drilled through



Ensure proper angle of string over nut or zero fret



If mounted too close, or too low, strings may be difficult to insert